

Long-lived flow

e-mail : netofpos@eecal.sogang.ac.kr, kps0517@eecal.sogang.ac.kr,
jjang@sogang.ac.kr

Reducing Entry Flow in Cache Memory Measuring Traffic and Long-Lived Flows

Jong Suh Park, Cheol-Woo Kim, Juwook Jang
Dept. of Electronics , Sogang University

Long-lived flow
가 , Sample and hold Multistage Filter 가
Long-lived flow , 80%가
가 20%
COMNET III

1. Sample and hold Multistage Filter
DoS(Denial Of Service)
Long-lived flow , 80%가
[8]. 가 20%

2. Large Flow 1% “Net Flow” [2]
[10]. Large Flow . Large Flow [6,7]
[3]. IP Protocol Type, Type of
Service Input interface identifier

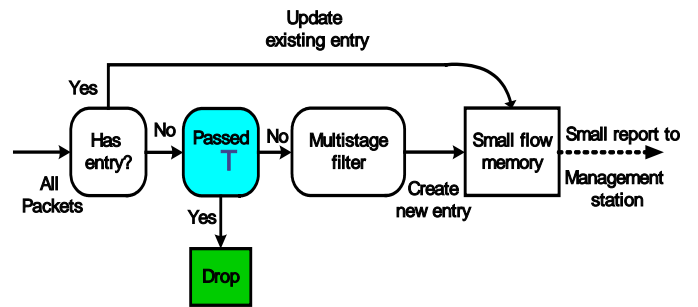
가 IETF RTFM(Real
Time Flow Measurement)[9] and hold Multistage Filter 가 Sample
가 [1].

3 , 4 , 5 poisson [4] R
 R = T (1-)

3. sample and hold multistage filter 가 가

large-flow 가 가 T
 가 가 [1]. T
 가 가

가 R = T (1, 0.5 1) R
 TCP source destination TCP
 (1)



< 2> Multistage filter Flow

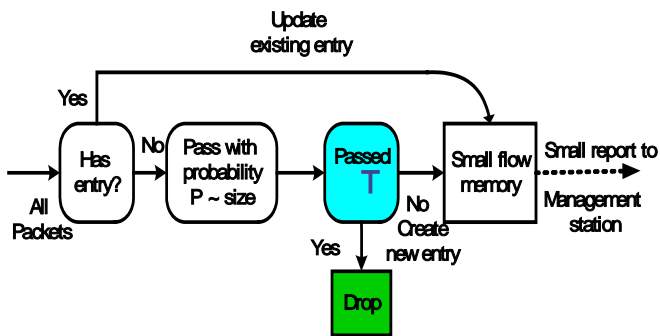
3.1 Sample and hold

Sample and hold P R 가 sample and hold R = [1]. P T (1-)

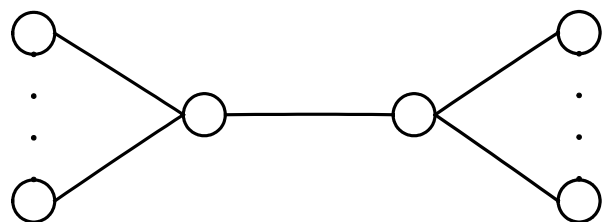
P 가 4. COMNET

R R hold multistage filter [5] , sample and flow

T 1 T Poisson (interarrival) TCP



< 1> Sample and hold Flow



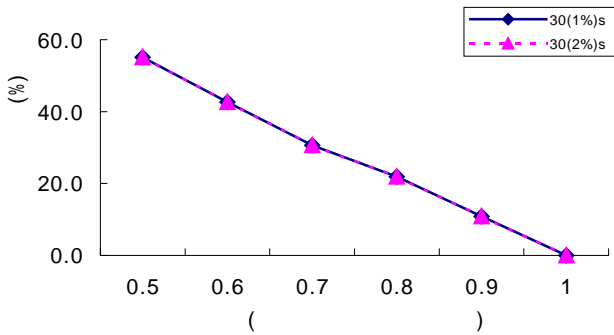
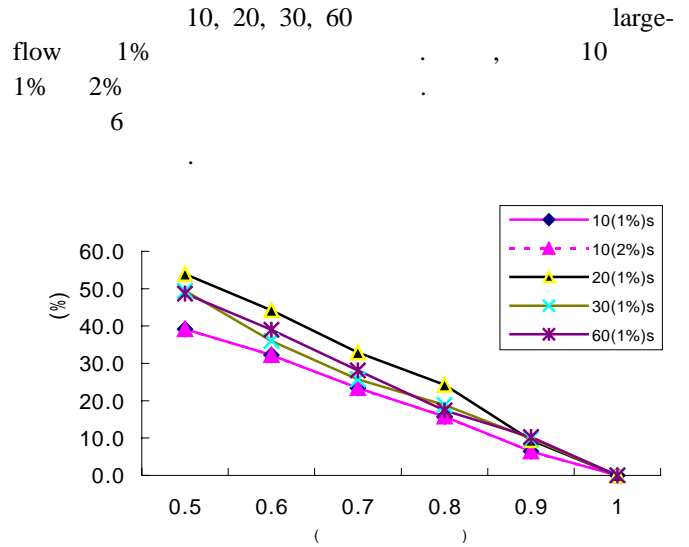
< 3>

4.1 Sample and hold

Sample 0 30 10% 1% 2% 4 1% 2% 가 가 가 1

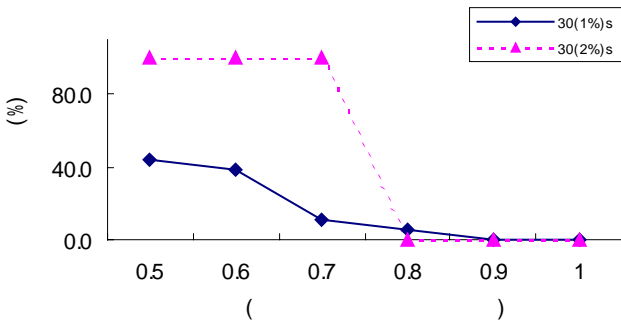
large flow 24 large flow 18 large flow 1

large-flow 가 가 가 1



4> Sample and hold

5 가 large-flow 가 0.8 , 1% large-flow 가 5.6% , 2% 0%



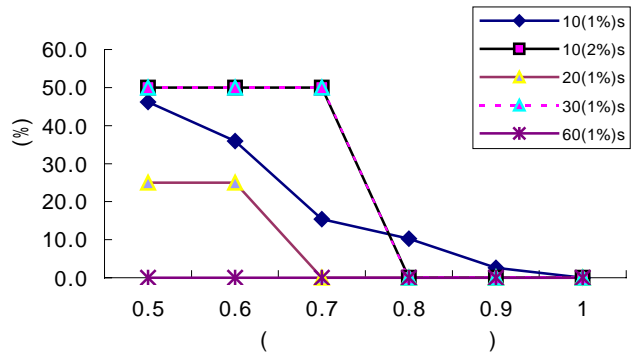
5> Sample and hold

4.2 Multistage filter

sample and hold large-flow 1 1024 가

6> Multistage filter

7 가 0.8 large-flow 가 10 large-flow 가 1% large-flow 0.8 10% 0 가 2% 0.8 가 20%



7> Multistage filter

5.

sample and hold multistage filter 80%가 가 20% large-flow 가 30

large-flow 가

- [1] Cristian Estan, George Varghese, New Directions in Traffic Measurement and Accounting. ACM SIGCOMM 2002.
- [2] Cisco netflow
<http://www.cisco.com/warp/publrc/732/tech/netflow>.
- [3] Sampled netflow.
http://cisco.com/univercd/cc/td/doc/product/software/ios120/120newft/120limit/120s/120s11/12s_sanf.htm.
- [4] David McDysan. QoS & Traffic Management in IP & ATM Networks. 2000.
- [5] COMMNET manual 2.1.1,2001
- [6] N. Duffield, C. Mills, and G. Ruth. Traffic flow measurement : Architecture. RFC 2722, Oct. 1999.
- [7] A. Feldmann et al. Deriving traffic demands for operational IP networks: Methodology and experience. In ACM SIGCOMM, Aug. 2000.
- [8] R. Mahajan et al. Controlling high bandwidth aggregates in the network.
- [9] N. Brownlee, C. Mills, and G. Ruth. Traffic flow measurement: Architecture. RFC 2722, Oct. 1999.
- [10] W. Fang and L. Peterson. Inter-as traffic patterns and their implications. In IEEE GLOBECOM, Dec. 1999.